



**Screw cap  
DIN 28  
without peak**

**Article no.: 00-1574**



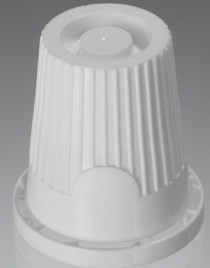
**Screw cap  
DIN 28  
with peak**

**Article no.: 00-1575**



**Screw cap  
DIN 28  
flip-top**

**Article no.: 12-1578**



**Screw cap  
DIN 28  
with child proof**

**Article no.: 00-2294**

**Characteristics:**

Material: PP  
Height: 40,5 mm  
Outer diameter:  
38,3 mm  
Thread: 29,9 mm  
Pitch: 4,0 mm

Incl. Scale for 15ml

Colour according to  
customer request  
Available in PCR-  
Material

**Characteristics:**

Material: PP  
Height: 43,5 mm  
Outer diameter:  
38,3 mm  
Thread: 29,8 mm  
Pitch: 4,0 mm

Colour according to  
customer request  
Available in PCR-  
Material

**Characteristics:**

Material: PP  
Height: 44,2 mm  
Outer diameter:  
38,3 mm  
Thread: 29,8 mm  
Pitch: 4,0 mm

Adjusted thread possible

Colour according to  
customer request  
Available in PCR-  
Material

**Characteristics:**

Material: PP  
Height: 44,5 mm  
Outer diameter:  
44,3 mm  
Thread: 28,4 mm  
Pitch: 7,0 mm

Adjusted thread possible

Colour according to  
customer request  
Available in PCR-  
Material

**Packaging:**

1.500 pcs. / box  
30.000 pcs. / pallet

**Minimum quantity :**  
3 pallets = 90.000 pcs.

**Packaging:**

1.500 pcs. / box  
30.000 pcs. / pallet

**Minimum quantity:**  
3 pallets = 90.000 pcs.

**Packaging:**

1.500 pcs. / box  
30.000 pcs. / pallet

**Minimum quantity:**  
3 pallets = 90.000 pcs.

**Packaging:**

1.100 pcs. / box  
22.000 pcs. / pallet

**Minimum quantity:**  
3 pallets = 66.000 pcs.